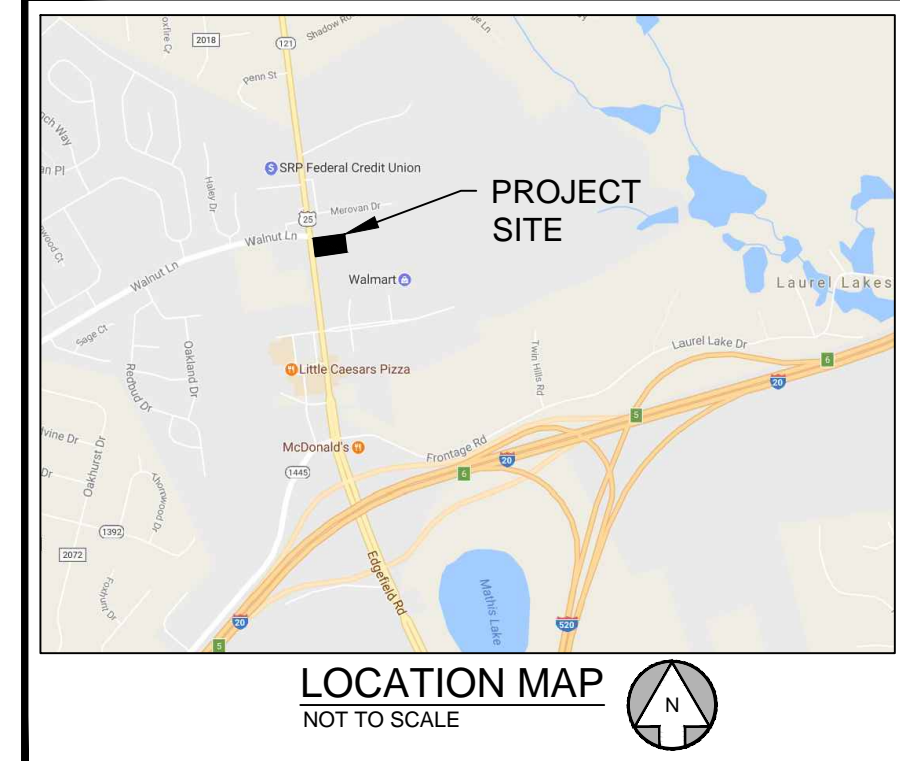
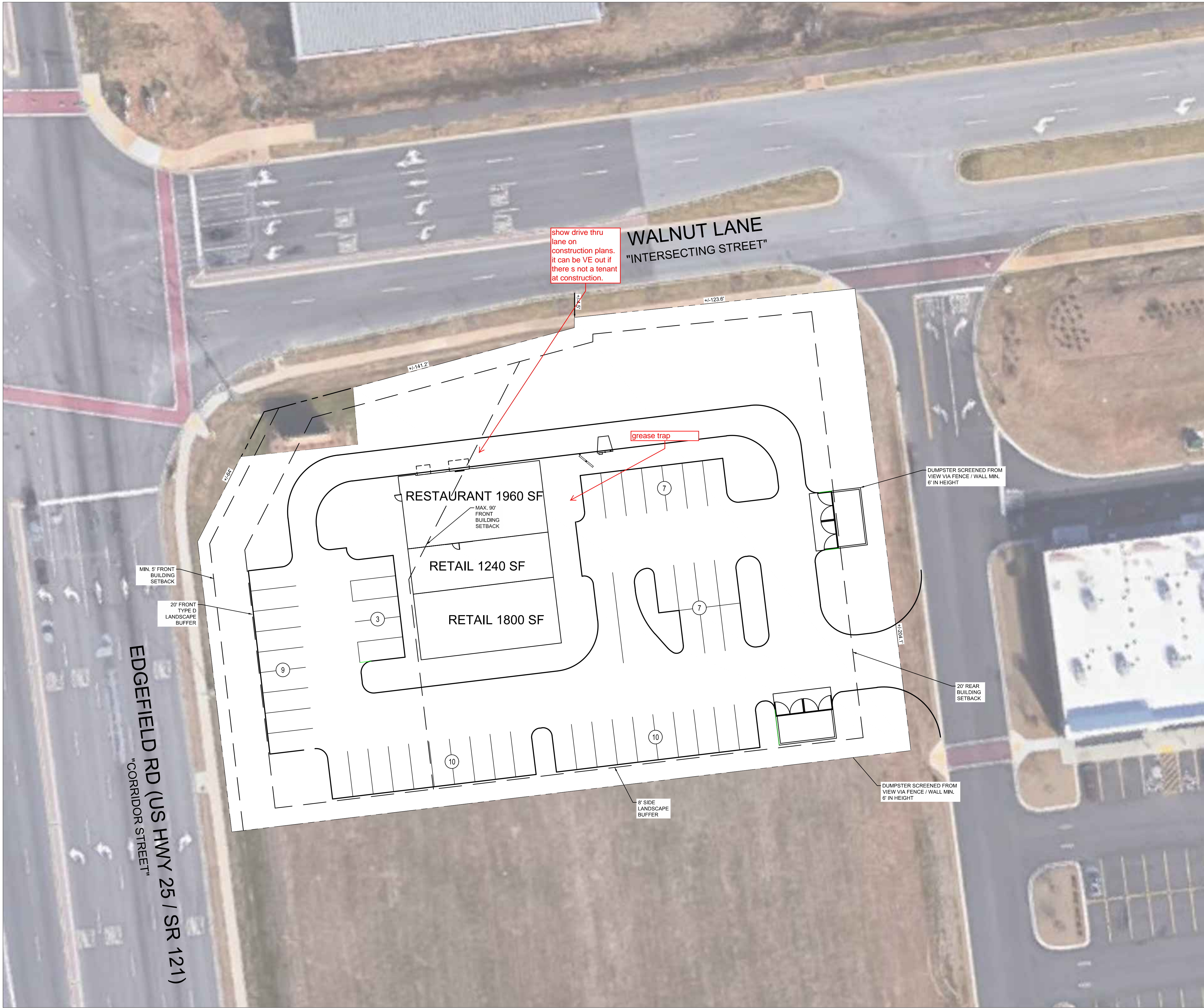


Drawing name: L:\Marketing\Wilson Development Group\Augusta, SC\2017-01-20 - CONCEPT PLAN.dwg SITE PLAN Mar 06, 2017 5:40pm by: frank.eubanks



SITE SUMMARY

SITE AREA	
SITE AREA:	1.33 ACRES
IMPERVIOUS AREA:	TBD
PERVIOUS AREA:	TBD
ZONING CLASSIFICATION	
JURISDICTION:	NORTH AUGUSTA, SC
ZONING:	PD (PLANNED DEVELOPMENT)
OVERLAY:	HC (HIGHWAY CORRIDOR OVERLAY DISTRICT)
ADJACENT ZONING / OVERLAY (SOUTH):	PD / HC
ADJACENT ZONING (EAST):	PD
BUILDING SETBACKS & REQUIREMENTS	
FRONT:	MIN. = 5' OR 30'; MAX = 90'
SIDE:	MIN. = REQ'D BUFFER, 0' OR 10'
REAR:	MIN. = REQ'D BUFFER, 20' OR 10' FROM ALLEY
MAX F.A.R.:	3.0
MIN. FRONTAGE BUILDOUT:	30%
BUILDING SUMMARY	
BUILDING AREA:	5,000 S.F.
MAX ALLOWED BUILDING COVERAGE:	TBD
PARKING SUMMARY	
RETAIL PARKING REQ.:	25 SPACES @ 5 SPACES / 1000 SF
PARKING PROV.:	46 SPACES
ACCESSIBLE REQ. VS PROV.:	2 / 2 (1 VAN)
STANDARD STALL DIMENSIONS:	9' x 18'
MIN. DRIVE WIDTH:	24'

PREPARED IN THE OFFICE OF:
LECRAW ENGINEERING
 © 2017 LECRAW ENGINEERING, INC.
 3475 CORPORATE WAY
 SUITE A
 DULUTH, GA 30096
 PHONE - 770-546-8100
 WWW.LECRAWENGINEERING.COM
 PE0007078

REV.#	DATE	CHECKED BY	DRAWN BY

CLIENT
WILSON DEVELOPMENT GROUP
 2964 PEACHTREE ROAD - SUITE 350 - ATLANTA, GA 30305

PROJECT
OUTLOT #5 - SWEETWATER SQUARE
 SE CORNER OF WALNUT LANE & EDGEFIELD RD
 NORTH AUGUSTA, AIKEN COUNTY, SOUTH CAROLINA

SEAL:

 PRELIMINARY: 3/8/17

DESIGN TEAM:
 DRAWN BY: TKS
 DESIGNED BY: TKS
 REVIEWED BY: TS

811
 Know what's below.
 Call before you dig.
 SCALE & NORTH ARROW:

 NORTH ARROW
 SCALE: 1" = 20'

JOB #:
 DATE: March 8, 2017